

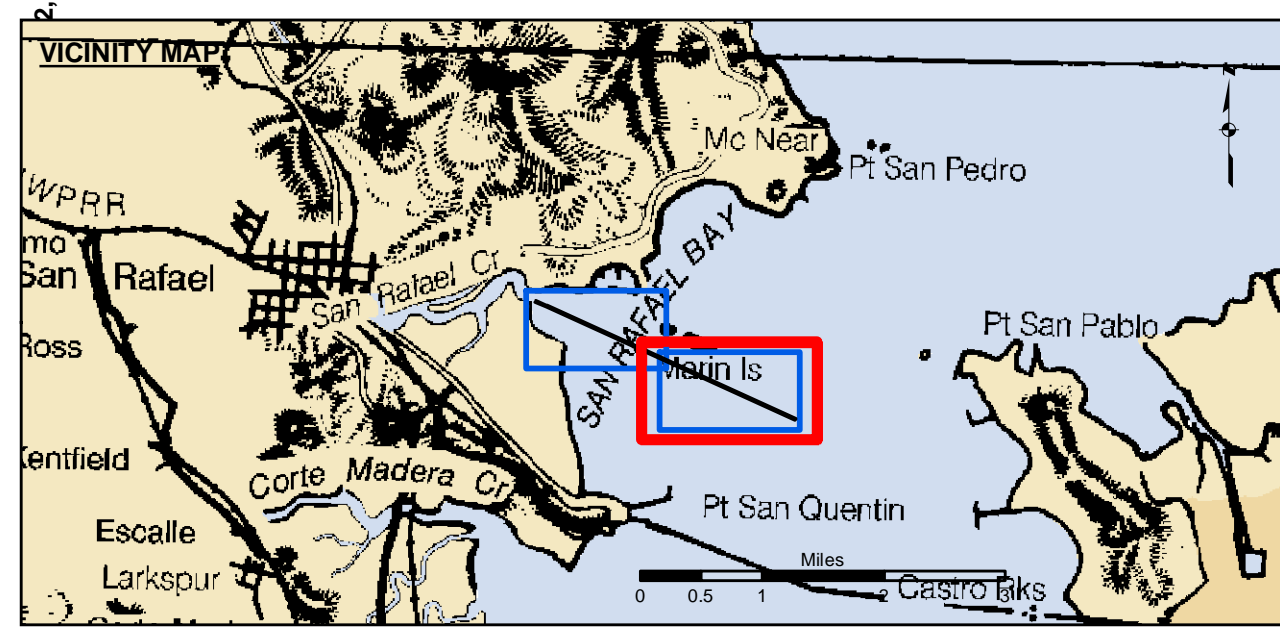
NAD 1983 CENTERLINE ANGLE POINTS		
ANGLE PT	X	Y
C01	5986334.07	2182035.55
C02	5997909.67	2176773.45

NAD 1983 CHANNEL ANGLE POINTS		
ANGLE PT	X	Y
1	5986637.57	2181930.55
2	5987101.87	2181719.45
3	5987110.07	2181737.65
4	5997928.37	2176818.95
5	5997886.97	2176727.95
6	5987076.67	2181646.65
7	5987076.97	2181664.85
8	5986606.07	2181878.95

US Army Corps of Engineers
San Francisco District
450 Market Street
San Francisco, CA 94102

DISCLAIMER
The United States Government furnishes this information as a public service. It is not intended to be used for any purpose other than that for which it was prepared. The United States Government makes no warranty, expressed or implied, concerning the accuracy, completeness, or timeliness of the information. The user is responsible for the results of any application of the data for other than its intended purpose. These data belong to the Government. Therefore, the recipient may not transfer these data to others without also transferring this disclaimer.

Prepared Under the Direction of KEVIN P. ARNETT LT Colonel, C.E., District Engineer	Chart Date: Mar 08, 2023
Submitted: Hydro Survey Team Leader	Designed by:
Recommended: Chief, Hydro Survey Section	Drawn by: PDT
Approved: Chief, Construction Branch	Checked by: PDT



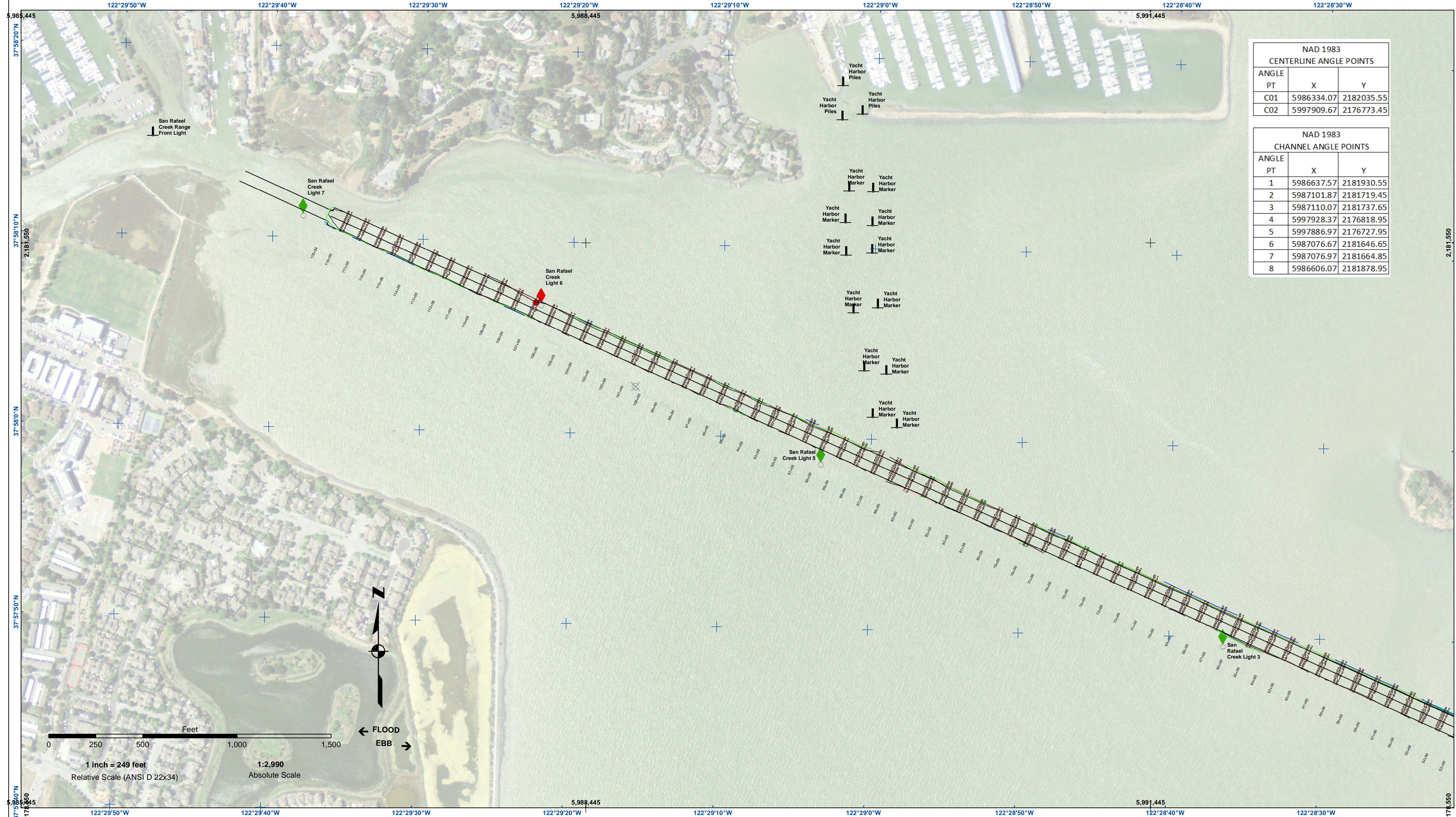
Federal Navigation Channel	Beacon, General	Contours
Shoaling Area	Obstruction Point	
Placement Area	Navigation Buoy	-8
Anchorage Area	Navigation Buoy	-7
Wreck Area	Shoalest Sounding*	-6
Submerged Wreck		-5
Angle Point		-4

NOTES:
DRAWING NOT TO BE USED FOR NAVIGATION. ONLY CHANNEL CONDITION AT DATE OF SURVEY. THE LOCATION OF ALL NAVIGATION AIDS ARE BASED ON INFORMATION PROVIDED BY THE U.S. COAST GUARD. BUOY LOCATIONS REPRESENT THE POSITION OF THE SINKER ONLY.
SURVEYED BY THE CORPS OF ENGINEERS.
SOUNDINGS FOR THE OUTSIDE CHANNEL (100 FT WIDE) TAKEN BY FATHOMETER; THE INSIDE CHANNEL (60 FT WIDE) TAKEN BY LEAFLINE, AND ARE SHOWN TO THE NEAREST FOOT AND TENTH OF A FOOT.
SOUNDINGS ARE BASED ON THE DATUM OF MEAN LOWER LOW WATER AT THE LOCALITY.

PLANE GRID AND COORDINATES ARE BASED ON LAMBERT PROJECTION, ZONE III NAD 83, CALIFORNIA, AS DESCRIBED IN SPECIAL PUBLICATION NO. 235, PUBLISHED BY NATIONAL OCEAN SURVEY. THE PROJECT DEPTH IS 8 FEET IN 100 FT WIDE CHANNEL ACROSS THE FLATS, THENCE 6 FT IN 60 FT WIDE CHANNEL IRWIN STREET
SOUNDINGS ARE BASE ON TIDE GAGE LOCATED AT EASTERLY END OF TURNING BASIN, AND REFERENCED TO U.S.C. & G.S. TIDAL B.M. NO. 17, A STD. DISK SET IN N.W. CORNER OF PUMP HOUSE DECK AT S. END OF YACHT CLUB BASIN, ON N. SIDE OF U.S. HWY. 101, AND 0.5 MI. S.E. OF SAN RAFAEL ELEVATION 9.81 FT ABOVE M.L.L.W.
SOUNDINGS ABOVE DATUM ARE PREFIXED WITH A (+) SIGN.

MARIN COUNTY CALIFORNIA
SAN RAFAEL CREEK
POST-DREDGE SURVEY
07 OCTOBER 2022
18 & 22 NOVEMBER 2022
04-07 FEBRUARY 2023

Sheet Reference Number
1 of 2



NAD 1983 CENTERLINE ANGLE POINTS		
ANGLE PT	X	Y
C01	5986334.07	2182035.55
C02	5997909.67	2176773.45

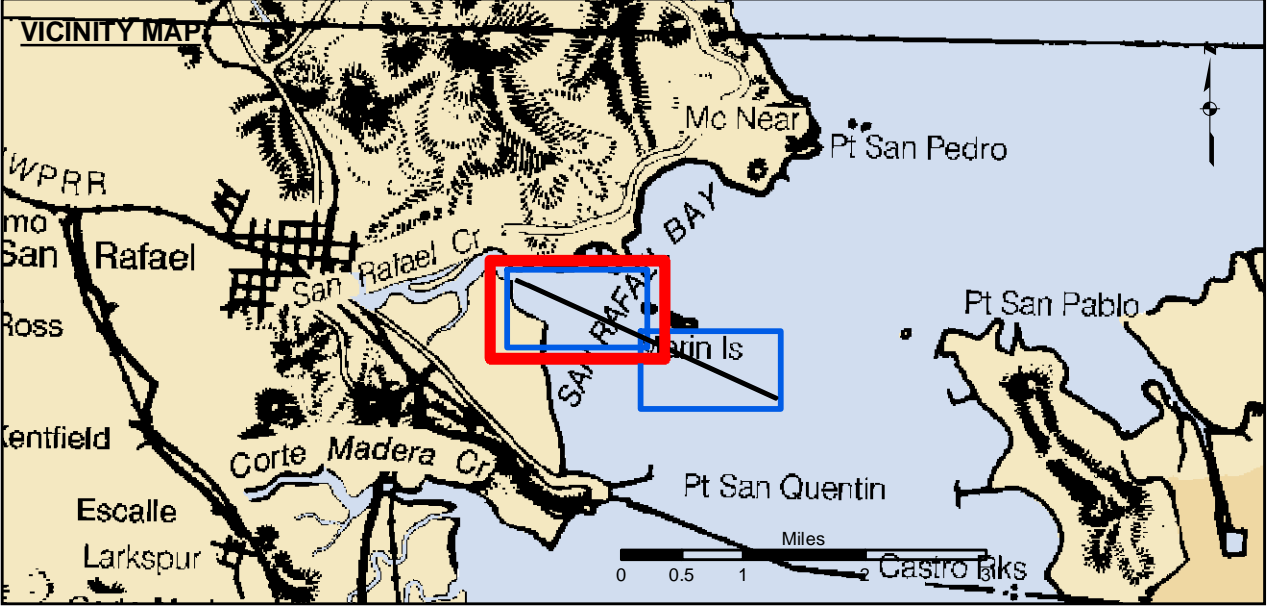
NAD 1983 CHANNEL ANGLE POINTS		
ANGLE PT	X	Y
1	5986637.57	2181930.55
2	5987101.87	2181719.45
3	5987110.07	2181737.65
4	5997928.37	2176818.95
5	5997886.97	2176727.95
6	5987076.67	2181646.65
7	5987076.97	2181664.85
8	5986606.07	2181878.95

US Army Corps of Engineers
San Francisco District
450 Market Street
San Francisco, CA 94102

DISCLAIMER
The United States Government furnishes this information for your use only. It is not to be used for any other purpose without the express written permission of the United States Government. The United States Government makes no warranty, expressed or implied, concerning the accuracy, completeness, or reliability of the information furnished hereunder. The United States Government is not responsible for the results of any use of the information furnished hereunder. The recipient may not transfer these data to others without also transferring this disclaimer.

Chart Date:	Mar 08, 2023
Designed by:	
Drawn by:	PDT
Checked by:	PDT
Approved:	Chief, Construction Branch
Submitted:	Hydro Survey Team Leader
Plotted by:	PDT
Flatted by:	
Surveyed by:	LT COLONEL C.E. DISTRICT ENGINEER
Prepared Under the Direction of:	KEVIN P. ARNETT

CALIFORNIA
MARIN COUNTY
SAN RAFAEL CREEK
POST-DREDGE SURVEY
07 OCTOBER 2022
18 & 22 NOVEMBER 2022
04-07 FEBRUARY 2023



- Federal Navigation Channel
- Shoaling Area
- Placement Area
- Anchorage Area
- Wreck Area
- Submerged Wreck
- Angle Point
- Beacon, General
- Obstruction Point
- Navigation Buoy
- Navigation Buoy
- Shoalest Sounding*
- Contours**
- 8
- 7
- 6
- 5
- 4

NOTES:
DRAWING NOT TO BE USED FOR NAVIGATION. ONLY CHANNEL CONDITION AT DATE OF SURVEY. THE LOCATION OF ALL NAVIGATION AIDS ARE BASED ON INFORMATION PROVIDED BY THE U.S. COAST GUARD. BUOY LOCATIONS REPRESENT THE POSITION OF THE SINKER ONLY.
SURVEYED BY THE CORPS OF ENGINEERS.
SOUNDINGS FOR THE OUTSIDE CHANNEL (100 FT WIDE) TAKEN BY FATHOMETER; THE INSIDE CHANNEL (60 FT WIDE) TAKEN BY LEAFLINE, AND ARE SHOWN TO THE NEAREST FOOT AND TENTH OF A FOOT.
SOUNDINGS ARE BASED ON THE DATUM OF MEAN LOWER LOW WATER AT THE LOCALITY.

PLANE GRID AND COORDINATES ARE BASED ON LAMBERT PROJECTION, ZONE III NAD 83, CALIFORNIA, AS DESCRIBED IN SPECIAL PUBLICATION NO. 235, PUBLISHED BY NATIONAL OCEAN SURVEY.
THE PROJECT DEPTH IS 8 FEET IN 100 FT WIDE CHANNEL ACROSS THE FLATS, THENCE 6 FT IN 60 FT WIDE CHANNEL IRWIN STREET
SOUNDINGS ARE BASE ON TIDE GAGE LOCATED AT EASTERLY END OF TURNING BASIN, AND REFERENCED TO U.S.C. & G.S. TIDAL B.M. NO. 17, A STD. DISK SET IN N.W. CORNER OF PUMP HOUSE DECK AT S. END OF YACHT CLUB BASIN, ON N. SIDE OF U.S. HWY. 101, AND 0.5 MI. S.E. OF SAN RAFAEL ELEVATION 9.81 FT ABOVE M.L.L.W.
SOUNDINGS ABOVE DATUM ARE PREFIXED WITH A (+) SIGN.